

VULCAN

ADJUSTABLE JETS

PF 1100 SERIES

MULTI JET

NOZZLES



DESIGN / APPLICATION DATA:

A sparkling and unique triple- tiered of clear streams. Ideal for small and medium sized displays. No constant water level is required.

SPECIFICATION DATA:

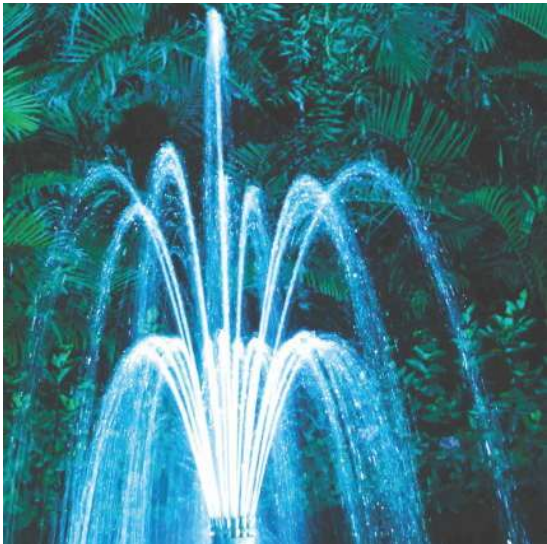
Material of construction is cast bronze.

OPERATING DATA:

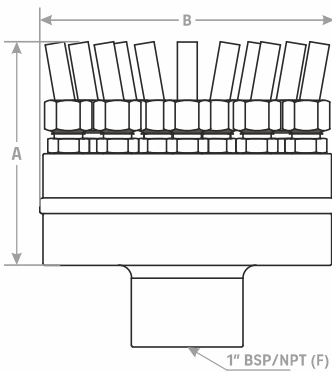
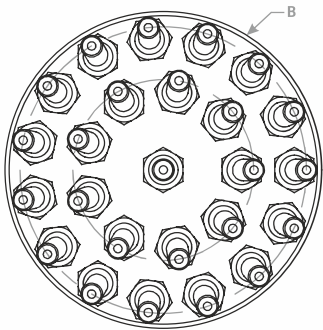
Noise : Low
 Visibility : Moderate
 Splash /Mist : Poor
 Wind Stability : Good
 Aeration Quality : Poor

SPECIALITY:

Removable cap for easy cleaning.
 No water level depended.



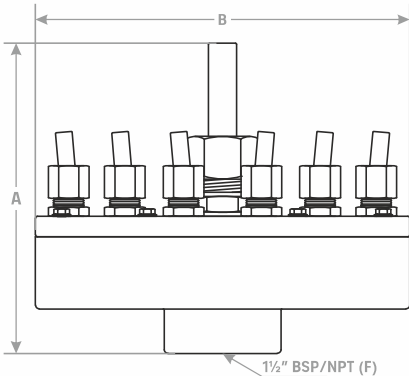
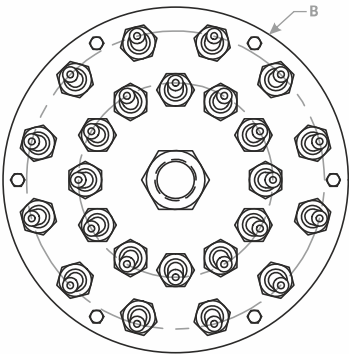
PF 1105



PF 1105



PF 1107



PF 1107

HYDRAULIC DATA

Model No.	BSP/ NPT	Nos of Jets	Dimension A (mm)	Dimension B (mm)	Orifice in mm		Stream Height in Meter						
							1.00	1.50	2.00	2.50	3.00	3.50	4.00
PF 1105	1"	25	115	114	1@4.00	LPM	70	80	95	110	121		
					24@3.00	Head in Mtr	1.50	2.00	2.60	3.25	4.00		
PF 1107	1 ½"	25	171	202	1@10.00	LPM	100	120	135	150	165	185	190
					24@4.75	Head in Mtr	1.50	2.00	2.60	3.25	4.00	4.50	5.20